

Czech orienteering association



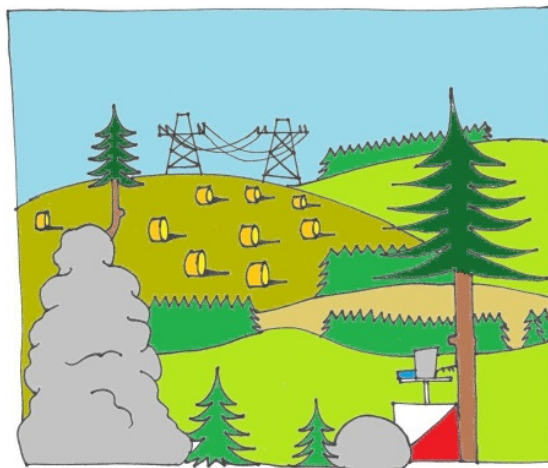
KOS TESLA BRNO



# IOF World Ranking Event in Foot Orienteering Bulletin No. 1 and 2



WRE – World Ranking Event – middle distance  
8<sup>th</sup> June 2014



Odranec, Czech Republic



Date: **Sunday 8<sup>th</sup> June 2014 – middle distance World Ranking Event (WRE) for W21E and M21E**  
 Saturday 7<sup>th</sup> June 2014 – long distance – National Ranking Event

Organized by: Czech orienteering association (ČSOS) and KOS Tesla Brno (TBM)

Competition centre: Odranec, meadow south of the village, 49°36'41.069"N, 16°7'48.308"E

Registration: In the competition centre:  
 Saturday 9:30 a.m. – 11:00 a.m.  
 Sunday 8:30 a.m. – 9:30 a.m.

Start: **Interval – Sunday 10:00 a.m. (Middle)**  
 Interval – Saturday 12:00 a.m. (Long) – National Ranking Event

Categories: **W21E and M21E**  
 (classes for National Event: see separate invitation on <http://www.tbm.cz/2014-ob-za/>)  
 Note: D=W=women; H=M=men

Application: Until **26<sup>th</sup> May 2014** online at <http://www.orientacnisporty.cz/oris/>; unregistered and foreigners on e-mail [prihlasky@tbm.cz](mailto:prihlasky@tbm.cz) (e-mail application is valid after confirmation).  
**All M/W21E entrants are requested to include their IOF Ranking ID (if available)**  
 After deadline only if it is possible by organizer and for double fees.

Entry fees:

WRE / Middle Distance / Sunday	By 26th May 2014		After 26th May 2014	
	CZK	EUR	CZK	EUR
W21 E and M21 E	CZK 160	€6	CZK 320	€12
Long Distance / Saturday	By 26th May 2014		After 26th May 2014	
	CZK	EUR	CZK	EUR
W21 E and M21 E	CZK 190	€7	CZK 380	€14
Accommodation in the gym using your own sleeping bags and mats in Primary School Jimramov	CZK 80	€3	Saturday only	
Accommodation in temporary camp at the Event centre	CZK 80	€3		
<i>Note: D=W=women; H=M=men</i>				

Payment: in term of application at bank account number

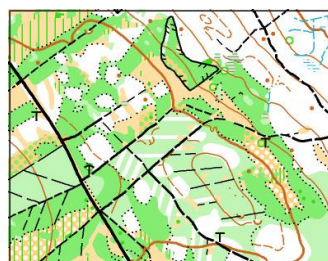
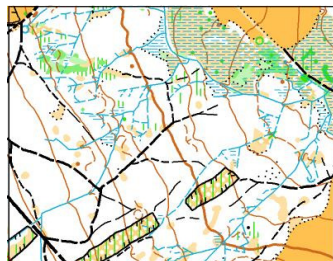
**IBAN: CZ75 0800 0000 0013 4172 6349; BIC code: GIBACZPX**

Organizers allow foreigners to pay entry fee at the Registration in the competition centre.

Distances: parking – competition centre 900 – 1 800 m cars; 600 m buses  
 Competition centre – start up to 2 000 m  
 Competition centre – finish 0 m

Maps: **Sunday (middle distance): Křišťálová studánka (1 : 10 000, e=5 m)**  
Maps for both days were prepared by Petr Mareček, state May 2014, map key ISOM 2000; maps for both days will be waterproof.

Terrain: Physically demanding terrain with typical highland ground, vegetation varied from easy to run areas to areas with reduced visibility and runability, moderate network of roads, sloping terrain at an altitude of 650-810 above sea level, in the lower parts of streams and marches to be found.



Punching system: SportIdent – it is possible to hire SportIdent card (40 CZK or 2 EUR per day)

Event officials: Competition director: Petr Strejček  
Main controller: Luděk Krτίčka, R1  
Course setting: Zdeněk Liščínský (middle distance) – R2

IOF Event Advisor: Juraj Petríneć (Slovakia)

Information: <http://www.tbm.cz/2014-ob-za/>  
Petr Strejček, [petr.strejcek@qsi.cz](mailto:petr.strejcek@qsi.cz), mobil. +420 603 565 614

Regulation: The race is organized according to IOF Orienteering Rules for Foot Orienteering and National Competition Order.

Embargoed areas: Area between Odranec, Kukla, Studnice, Pohledec is an embargoed area from the moment of publishing this Bulletin.

Transportation: In case of traveling by bus, please inform organizers in entry application.

Accommodation: The organizer is providing an accommodation in the gym using your own sleeping bags and mats in Primary School Jimramov and in temporary camp at the Event centre (80 CZK or 3 EUR per person per night). It is necessary to reserve this type of accommodation together with application.  
There will be also possibility to order dinner at school canteen together with entry application.  
Other accommodation website to be displayed on <http://www.tbm.cz/2014-ob-za/>

**All competitors are reminded that orienteering is an adventure sport and that they take part voluntarily and at their own risk, without any claim in case of injury during or because of this competition later on.**

Luděk Krτίčka  
*National controller*

Petr Strejček  
*competition director*

Juraj Petríneć (Slovakia)  
*IOF Event Advisor*