

Czech orienteering association



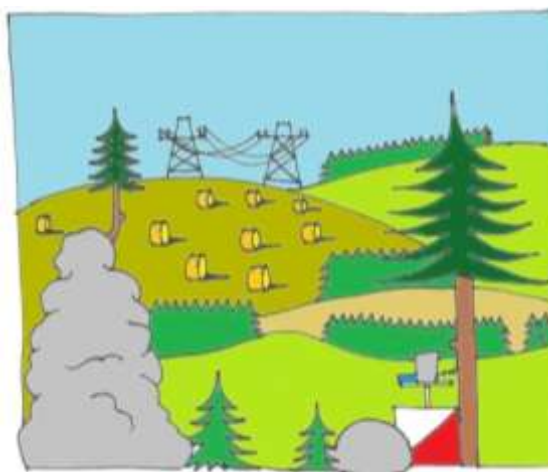
KOS TESLA BRNO



IOF World Ranking Event in Foot Orienteering Bulletin No. 3



**WRE – World Ranking Event – middle distance
8th June 2014**



Odranec, Czech Republic

Date: **Sunday 8th June 2014 – middle distance World Ranking Event (WRE) for W21E and M21E**
 Saturday 7th June 2014 – long distance – National Ranking Event

Organized by: Czech orienteering association (ČSOS) and KOS Tesla Brno (TBM)

Rules: The WRE events are subject to the Competition Rules for IOF Foot Orienteering Events (valid from 01 January 2014). There are no variations to these Rules.

Competition centre: Odranec, meadow south of the village, 49°36'41.069"N, 16°7'48.308"E (see Map No. 1)

Registration: In the competition centre:
 Saturday 9:30 a.m. – 11:00 a.m.
 Sunday 8:30 a.m. – 9:30 a.m.

Parking: Parking of vehicles will be organized in two options depending on the weather, see the Map No. 2 below of parking and arrival published also on the website of the race.

"Dry option" - parking on the meadow directly below the center of the village Odranec, 49 ° 36'49 .429 " N , 16 ° 8'12 .510 " E, parking distance "dry version" - the center of the plant 400m.

"Wet option" - parking on the meadow adjacent to the road Kuklík - Odranec, 49 ° 37'12 .226 " N , 16 ° 7'41 .054 " E, parking distance "wet version" - the center of the race 1500m, the path marked with a green and white ribbons .
 In the case of "wet version" will be possible to park personal vehicles of families with preschool children in the area of Odranec farm .

The price for parking is 40 CZK / weekend, respectively 20, - CZK per day .

The entire village Odranec as well as on access roads is strictly prohibited parking areas outside the organizer under threat of disqualification.

Accommodation: The organizer is providing an accommodation in the gym using your own sleeping bags and mats in Primary School Jimramov (see Map No. 3) and in temporary camp at the Event centre (80 CZK or 3 EUR per person per night).
 Other accommodation website to be displayed on <http://www.tbm.cz/2014-ob-za/>

Catering: Available in event centre and more possibilities in nearby restaurants.
 There will be also possibility to order dinner at school canteen. Please inform organizers on prihlasky@tbm.cz until 3rd June 2014.

Transportation: Not provided by organizer

Distances: Parking "Dry option" – competition centre 400 m cars; 600 m buses
 Parking "Wet option" – competition centre 1 500 m cars; 600 m buses
 Competition centre – start 1200 m (marked with blue-white ribbons)
 Competition centre – finish 0 m

Start List: The start list for middle distance for M21-E and W21-E (WRE) was prepared based on IOF FootO World Ranking. Issued on 30th April 2014. Competitors so far not listed in FootO World Ranking, or those who have not provided their WRE ID in their initial registration to this even, were drawn at the beginning of the start list.
Individual interval start is used.

Start 000: **Interval – Sunday 10:00 a.m. (Middle)**
Interval – Saturday 12:00 a.m. (Long) – National Ranking Event

Courses:	Category	Distance	Climbing	Number of Controls
	D21E	5,2 km	95 m	26
	H21E	6,6 km	115 m	28

Number Bibs: Competitors will take themselves number bibs at the start area.

Control Description: The control description will be printed on the map (only WRE). The control descriptions will be also available separately pre-printed in the competition centre.
Dimensions of separate control descriptions: M21-E: 50x192mm, W21-E: 50x180mm

Maps: **Sunday (middle distance): Křišťálová studánka (1 : 10 000, e=5 m), 268x297mm for WRE**

Maps for both days were prepared by Petr Mareček and Martin Kratochvíl, state May 2014, map key ISOM 2000; maps for both days will be waterproof.

Warning:

Optically denser but runnable forest is in accordance with the classification of ISOM 2000 symbol mapping 405 (white). It is forbidden to enter the area on the map marked with 415 - cultivated area (field) 527 - private, 709 - and 711-bounds area - prohibited action. It is forbidden to enter the fenced enclosed symbol 524 - high fence. Violations of these prohibitions will be in critical areas thoroughly monitored and punished by disqualification.

Special map symbols:

- green cross - rootstock
- green circle - significant tree
- brown cross - platform
- black circle - triangulation rod
- black cross - man-made object (shelter)

Terrain: Physically demanding terrain with typical highland ground, vegetation varied from easy to run areas to areas with reduced visibility and runability, moderate network of roads, sloping terrain at an altitude of 650-810 above sea level, in the lower parts of streams and marches to be found.



Clothing:	No restriction. Full body cover or with short sleeves recommended.	
Punching system:	SportIdent – it is possible to hire SportIdent card (40 CZK or 2 EUR per day) In case of failure of SI units use punching pliers and mark it in to designated boxes on the map. Map with this stamping hand-over at finish after the course to pass inspection.	
Compulsory Route:	start - start of orientation Last control point - finish They are labelled red ribbons or corridors.	
Embargoed Areas :	Not permitted to enter forest around Competition Centre, except on the way to start on the marked path. Roads in the north-western and south-eastern edge of the map are for racers prohibited. It is busy road on which the car moving at high speeds. On the map are marked with road 711 – prohibited course. In the northern part of the map and the near Competition centre are small zone No. 1 of Protected Nature Area, to which access is prohibited. The map marked with 709 - inaccessible area. In the Competition Area is new pond under construction . This area is marked on the map symbol 709 - inaccessible area. Note: During the race, competitors crossing forest road, which occasionally can move cars and cyclists. Please be careful when crossing. The forest logging takes place, be careful. Insignificant traces of machines are not marked on the map.	
Time Limit:	90 minutes for WRE	
Refreshment:	Water will be available at the pre-start and finish.	
WC:	Mobile WC in the competition centre.	
Washing:	In the event centre, only cold water.	
Jury:	Head: Juraj Petrínek (Slovakia) Members: Milan Venhoda, Michal Jedlička, Petr Turczer	
Complaints:	To controller in accordance with IOF orienteering rules. The time limit for making complaints at the WRE event is 15 minutes after the full results for each of M/W21E classes is first displayed.	
Event officials:	Competition director:	Petr Strejček
	Main controller:	Luděk Krtička, R1
	Course setting:	Zdeněk Liščinský (middle distance) – R2
IOF Event Advisor:	Juraj Petrínek (Slovakia)	
Prices:	First three competitors in W21-E and M21-E (WER) will be awarded.	
Information:	http://www.tbm.cz/2014-ob-zg/ Petr Strejček, petr.strejcek@qsi.cz , mobil. +420 603 565 614	

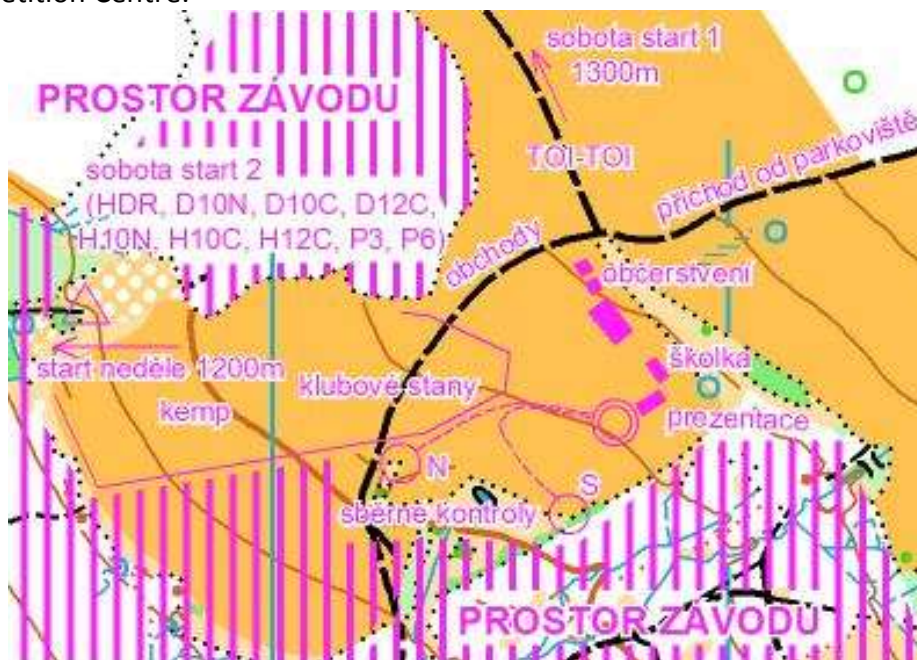
All competitors are reminded that orienteering is an adventure sport and that they take part voluntarily and at their own risk, without any claim in case of injury during or because of this competition later on.

Luděk Krτίčka
National controller

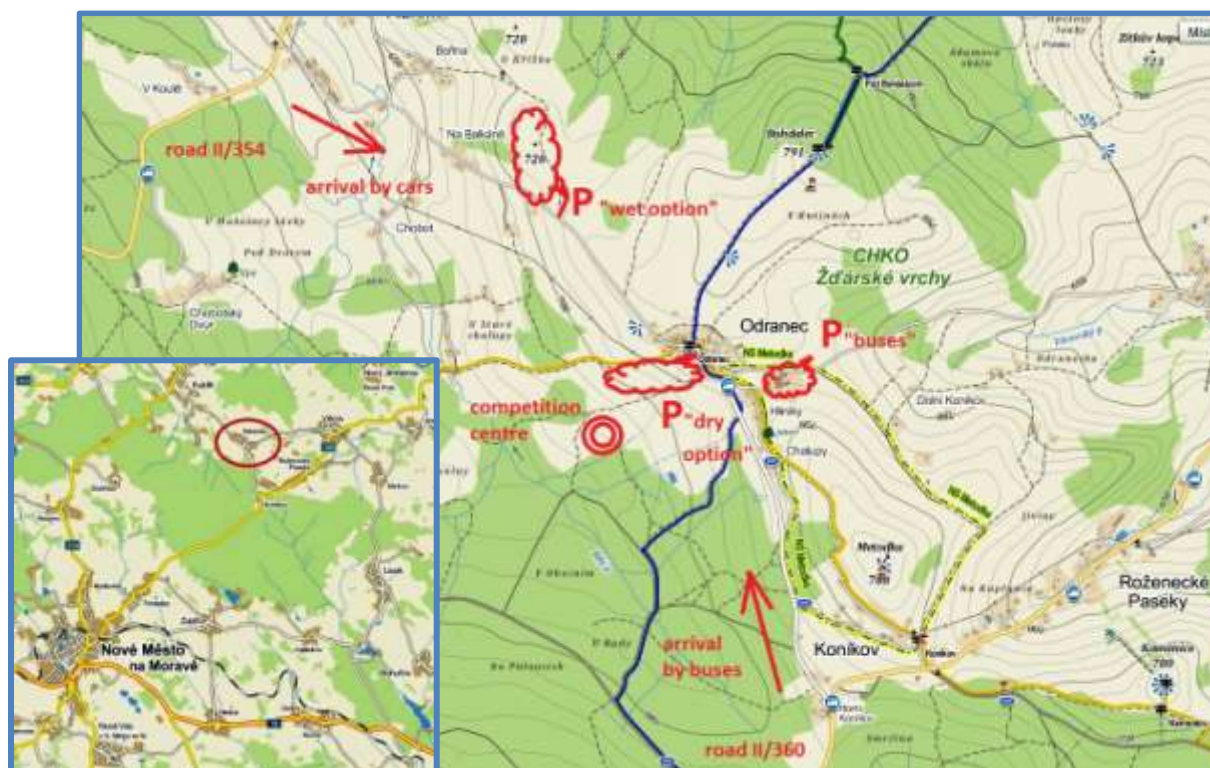
Petr Strejček
competition director

Juraj Petríneć (Slovakia)
IOF Event Advisor

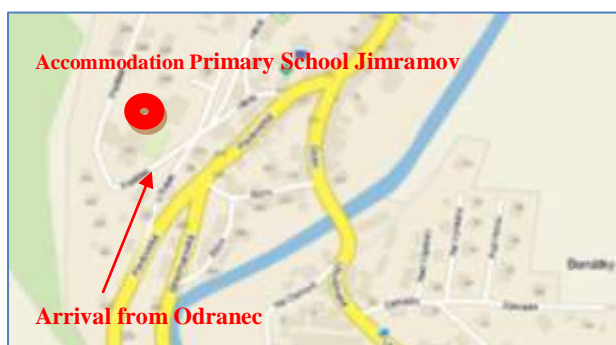
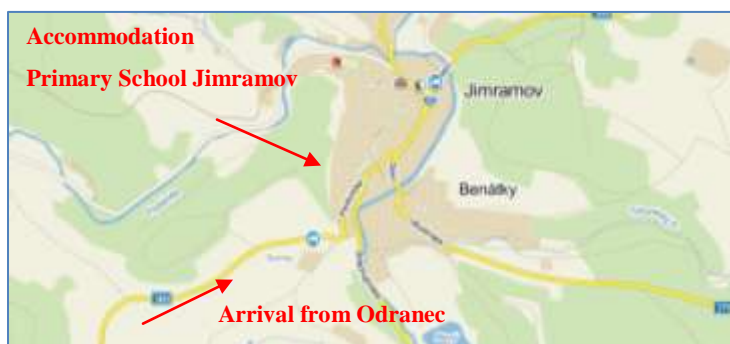
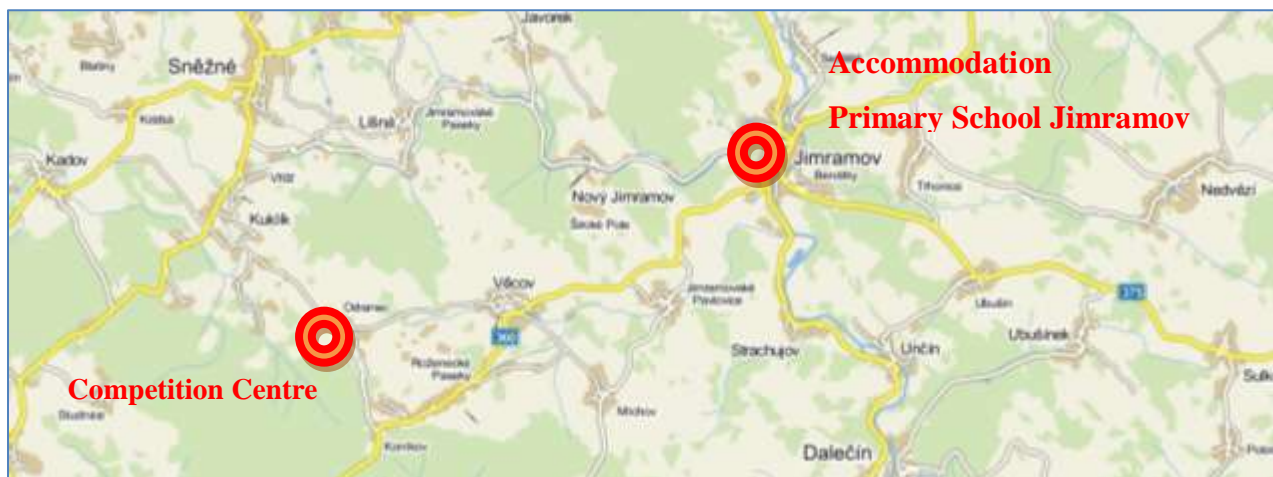
Map No.1 - Competition Centre:



Map No.2 – Arrival and parking:



Map No. 3 – Accommodation in Primary School Jimramov:



ČSOS Partners



Competition Partners

